

## 1315 Procession Newsletter - June 2015



Dear Volunteers,

As we get very close to our medieval weekend, a few details about timings and events. Any queries, please contact me on [framptonrose@gmail.com](mailto:framptonrose@gmail.com) or 01452 740894.



**Giant St Blaise** is looking splendid and is seen here being dressed. The magnificent **Siglo the Salmon** is also almost finished.

### **Porters urgently required**

For obvious reasons (!) we are looking for tall men to act as porters for our giant.

St Blaise will have his first public outing at Upton St Leonards this Saturday, 20 June at 1.45pm, along with Siglo. Anyone who is over 5'11" tall and would like to help at this event - please contact Steve Rowley without delay [steve@artension.com](mailto:steve@artension.com) or 01453 763181 or 07803 052723.

We are short of porters for St Blaise and Siglo at Whaddon 700. Please contact [jonathanmj@virginmedia.com](mailto:jonathanmj@virginmedia.com) or 01452 502174 or 07443 487043 if you can help.

### **Middle Ages**

Our singing volunteers have a name - 'Middle Ages'.

### **Whaddon 700 - Saturday 27 June**

Porters to meet at Tuffley Primary School at 10.15am. Other participants at 10.45am. More details will appear on the websites later in the week.

### **Frampton's Procession - Sunday 28 June**

8.30am Blessing of St Blaise and Siglo at Frampton church and breakfast for their porters. For catering purposes, please let [pennysumsion@tiscali.co.uk](mailto:pennysumsion@tiscali.co.uk) know if you are coming.

9.30am Porters meet at the Wool Barn, Manor Farm.

9.45am All other procession participants to be ready at the Wool Barn

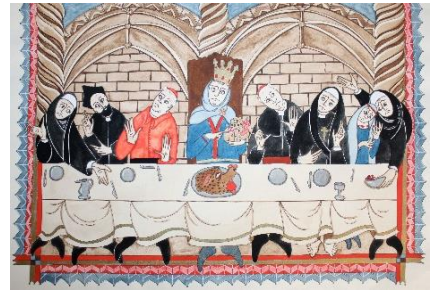
**General participants, including singers and dancers, please park at the south end of the village green, as directed. Musicians and porters to park beyond the Wool Barn at the far end of Manor Farmyard.**

[www.1315.org.uk](http://www.1315.org.uk) and [www.dedication1315.org.uk](http://www.dedication1315.org.uk) are carrying further information and overleaf are more details about the Churchwardens' Ale at Frampton.

Thank you, good luck and have lots of medieval fun!

## Friday 26 June

**7pm Medieval Feast** at Fretherne church (all tickets sold) followed by a mime play, and singing by Delfryn. Enjoy 'parables of our own time', an exhibition of banners by local artists, and Fretherne's timeline. (Church open 10am-5pm all weekend.)



## Saturday 27 June

**3pm – 8pm Churchwardens' Ale** at Frampton church. **Please park in designated car park and follow footpaths to the church.**

3.15pm Maypole dancing, 3.30pm mystery play, 3.45pm story telling, 4pm singing by Lakefield School pupils, 4.30pm hobby horse and jousting competitions, 5pm mystery play, 5.15pm story telling, 5.30pm dancing with Giant St Blaise and Siglo the Salmon, 6pm singing by Middle Ages, 7.30pm 'last orders' for licensed bar, 8pm Service of Compline.



Other activities include 'medieval style' face painting (3pm-5pm), the village stocks, quoits and stilts, hog roast, WI medieval food, enactments of cookery, medicine, games, armour-making, scribing, spinning and stick weaving. Delfryn will sing during the afternoon, Alison Merry's wonderful illustrations of medieval life will be on sale, and Lakefield School's 'medieval wall paintings' and Frampton's timeline will be on display inside the church.

Times and activities are correct at the date of printing but may be subject to change

## Sunday 28 June

**10am – 11.30am Dedication Day procession with a giant and beasts** from Manor Farm to Frampton church (road closure in operation – please park in designated car park by 10am).

Participants (all welcome, including Lakefield School pupils and hobby horses!) to meet at the Wool Barn by 9.45am.

**11.30am** Service in Frampton church followed by a bring and share picnic lunch or pre-booked ploughmans (see website)



KILCOT CONSERVATION

Friends First Day Schools Fund

